



SERIES WM2 & WMT2

MULTI-JET WATER METER

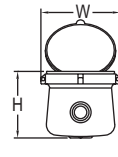
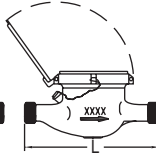
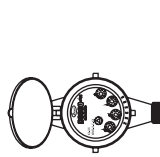
Economical, Brass Body, Dry Dial



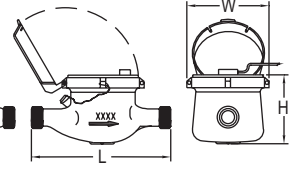
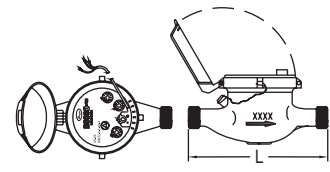
WM2



WMT2



WM2



WMT2



Size in (mm)	Spud NPSM (BSPP)	Length 'L' in (mm)	Width 'W' in (mm)	Height 'H' in (mm)	Weight lb (kg)
5/8 x 1/2 (15)	3/4" (3/4")	6-1/2 (165)	3-45/64 (94)	4-15/64 (107.5)	3.75 (1.7)
5/8 x 3/4	1" (1")	7-1/2 (190)	3-45/64 (94)	4-15/64 (107.5)	3.97 (1.8)
3/4 (20)	1" (1")	7-1/2 (190)	3-45/64 (94)	4-15/64 (107.5)	4.9 (2.2)
1 (25)	1-1/4" (1-1/4")	10-1/4 (260)	3-55/64 (98)	4-5/8 (117.5)	6.4 (2.9)
1-1/4 (32)	1-1/2" (1-1/2")	10-1/4 (260)	3-55/64 (98)	4-5/8 (117.5)	8.2 (3.7)
1-1/2 (40)	2" (2")	11-13/16 (300)	4-51/64 (122)	5-9/16 (141.5)	13.52 (6.17)
2 (50)	2-1/2" (2-1/2")	11-13/16 (300)	5-45/64 (145)	6-31/32 (177)	18.74 (8.5)

The Series WM2 Multi-Jet Water Meter is a series of mechanical, water totalizing meters that display the total water usage in gallons or m³. They are available in a range of body sizes and include NPT or BSPT couplings. The Series WMT2 Multi-Jet Water Meter with Pulsed Output is a series of mechanical, water totalizing meters that display the total water usage in gallons or m³ and provide a reed switch output proportional to flow rate. They are available in a range of body sizes and include NPT or BSPT couplings.

FEATURES/BENEFITS

- Multi-jet design allows for simplicity and accuracy with wide flow ranges, even in low flow applications
- Magnetically driven, hermetically sealed register does not leak or fog and is completely separated from the water
- Designed for long service life and maintenance-free operation, even under harsh conditions
- Integral strainer that protects meter from particulate damage
- Easy installation with included coupling adapters

APPLICATIONS

- Irrigation
- Cooling systems
- Filtration systems
- Water monitoring

SPECIFICATIONS

Service: Water.
Wetted Materials: Body: Brass, polyethylene; Couplings: Brass; Measuring Chamber: Polyethylene, ABS plastic, ferrite, acetal.
Flow Range: See model chart.
Accuracy: Transitional flow: ±5%; Nominal flow: ±2%.
Temperature Limit: 104°F (40°C).
Pressure Limit: 232 psi (16 bar).
Totalizing Display Maximum: See model chart.
Output Signal: Pulse output with frequency proportional to flow rate (WMT2 only).
Pulse Options: 0.1 gal, 1 gal, 10 gal, 100 gal per pulse (1 L, 10 L, 100 L per pulse (WMT2 only)).
Electrical Rating: 0.01 A @ 24 VAC/DC (WMT2 only).
Electrical Connections: Color-coded lead wires, 4.5' (1.5 m) long (WMT2 only).
Mounting Orientation: Horizontal with the register face pointing up.
Weight: See dimension chart.

MODEL CHART

Model	Size	Coupling Size	Max Flow GPM (Gallons Per Minute)	Nominal Flow Range	Transitional Flow	Display Max (Gallons)
WM2-A-C-01	5/8 x 1/2"	1/2" NPT	20	1 to 20	0.25	9,999,999.99
WM2-A-C-02	5/8 x 3/4"	3/4" NPT	20	1 to 20	0.25	9,999,999.99
WM2-A-C-03	3/4"	3/4" NPT	30	2 to 30	0.5	99,999,999.9
WM2-A-C-04	1"	1" NPT	50	3 to 50	0.75	99,999,999.9
WM2-A-C-06	1-1/2"	1-1/2" NPT	100	5 to 100	1.5	99,999,999.9
WM2-A-C-07	2"	2" NPT	160	8 to 160	2	99,999,999.9

MODEL CHART

Model	Size	Coupling Size	Max Flow m ³ /h	Nominal Flow Range	Transitional Flow	Display Max (m ³)
WM2-B-C-08	15 mm	1/2" BSPT	3	0.12 to 1.5	0.03	99,999.9999
WM2-B-C-10	20 mm	3/4" BSPT	5	0.2 to 2.5	0.05	99,999.9999
WM2-B-C-11	25 mm	1" BSPT	7	0.28 to 3.5	0.07	99,999.9999
WM2-B-C-12	32 mm	1-1/4" BSPT	12	0.48 to 6	0.12	99,999.9999
WM2-B-C-13	40 mm	1-1/2" BSPT	20	0.8 to 10	0.2	999,999.9999
WM2-B-C-14	50 mm	2" BSPT	30	1.2 to 15	0.3	999,999.9999

MODEL CHART

Model	Size	Coupling Size	Max Flow GPM (Gallons Per Minute)	Nominal Flow Range	Transitional Flow	Display Max (Gallons)	Pulse Rate (Gal./Pulse)
WMT2-A-C-01	5/8 x 1/2"	1/2" NPT	20	1 to 10	0.25	9,999,999.99	0.1
WMT2-A-C-02	5/8 x 3/4"	3/4" NPT	20	1 to 20	0.25	9,999,999.99	0.1
WMT2-A-C-03*	3/4"	3/4" NPT	30	2 to 30	0.25	9,999,999.99	0.1
WMT2-A-C-04	1"	1" NPT	50	3 to 50	0.75	99,999,999.9	0.1
WMT2-A-C-01-1	5/8 x 1/2"	1/2" NPT	20	1 to 10	0.25	9,999,999.99	1
WMT2-A-C-02-1	5/8 x 3/4"	3/4" NPT	20	1 to 20	0.25	9,999,999.99	1
WMT2-A-C-03-1*	3/4"	3/4" NPT	30	2 to 30	0.25	9,999,999.99	1
WMT2-A-C-04-1	1"	1" NPT	50	3 to 50	0.75	99,999,999.9	1
WMT2-A-C-06-10	1-1/2"	1-1/2" NPT	100	5 to 100	1.5	99,999,999.9	10
WMT2-A-C-07-10	2"	2" NPT	160	8 to 160	2	99,999,999.9	10
WMT2-A-C-04-100	1"	1" NPT	50	3 to 50	0.75	99,999,999.9	100
WMT2-A-C-07-100	2"	2" NPT	160	8 to 160	2	99,999,999.9	100

*Does not include inlet filter.

MODEL CHART

Model	Size	Coupling Size	Max Flow m ³ /h	Nominal Flow Range	Transitional Flow	Display Max (m ³ /h)	Pulse Rate (L/Pulse)
WMT2-B-C-08-1	15 mm	1/2" BSPT	3	0.12 to 1.5	0.03	99,999.9999	1
WMT2-B-C-10-1*	20 mm	3/4" BSPT	5	0.2 to 2.5	0.05	99,999.9999	1
WMT2-B-C-11-1	25 mm	1" BSPT	7	0.25 to 3.5	0.07	99,999.9999	1
WMT2-B-C-12-1	32 mm	1-1/4" BSPT	12	0.48 to 6	0.12	99,999.9999	1
WMT2-B-C-08-10	15 mm	1/2" BSPT	3	0.12 to 1.5	0.03	99,999.9999	10
WMT2-B-C-12-10	32 mm	1-1/4" BSPT	12	0.48 to 6	0.12	99,999.9999	10
WMT2-B-C-14-10	50 mm	2" BSPT	30	1.2 to 15	0.3	999,999.9999	10
WMT2-B-C-12-100	32 mm	1-1/4" BSPT	12	0.48 to 6	0.12	99,999.9999	100
WMT2-B-C-14-100	50 mm	2" BSPT	30	1.2 to 15	0.3	999,999.9999	100

*Does not include inlet filter.

USA: California Proposition 65

⚠ WARNING: Cancer and Reproductive Harm - www.P65Warnings.ca.gov